

CRAFTY KIDS



2 course €12.50 • 3 course €16.50

Little Bites €4.50

Homemade Soup of the Day
served with white, brown or soda bread
Allergens 7, 12

Fresh Fruit Salad

Cheesy Garlic Bread
Allergens 6 Wheat, 7, 12



Big Bites €9.00

Golden Fried Chicken Goujons & Chips
Allergens 6 Wheat, 7, 11, 12

Penne Pasta
in a rich tomato sauce with parmesan shavings
Allergens 6 Wheat, 7, 11

Bangers & Mash
served with gravy
Allergens 6 Wheat, 7, 11, 12

Traditional Fish & Chips
Allergens 3 Haddock, 6 Wheat, 7, 11

8" Kids Margarita or Pepperoni Pizza
served with a side of chips
Allergens 6 Wheat, 7, 11



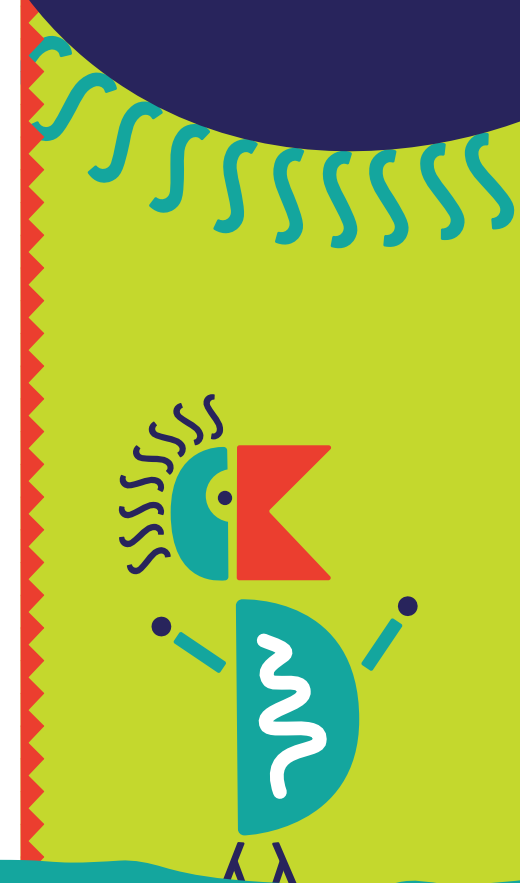
Sweet Bites €4.50

Wobbly Jelly & Vanilla Ice Cream
Allergens 7

Salted Caramel Profiteroles
with chocolate sauce
Allergens 6 Wheat, 7, 11

Ice Cream
2 scoops, choose your flavour!
Topped with rainbow sprinkles & mini marshmallows
Allergens 6 Wheat, 7, 11

Turn over for some fun games and activities!



ALLERGEN INDEX

No.1 – Crustaceans
No.2 – Molluscs
No.3 – Fish
No.4 – Peanuts
No.5 – Nut

No.6 – Cereal containing
Gluten
No.7 – Milk / Milk products
No.8 – Soya
No.9 – Sulphur Dioxide

No.10 – Sesame Seeds
No.11 – Egg
No.12 – Celery & Celeriac
No.13 – Mustard
No.14 – Lupin

** These menu items can be adapted to be Gluten Free

Please inform staff prior to placing an order if you have any specific dietary requirements or food allergies. Our kitchen and suppliers handle numerous ingredients and allergens, whilst we have strict controls in place to reduce the risk of contamination, unfortunately it is not possible for us to guarantee that our dishes will be 100% allergen free.



CLAYTON HOTEL
SILVER SPRINGS | CORK

**Time to
Colour**



Time to
Colour



Word
Search



MELON

STRAWBERRY

CHERRY

PINEAPPLE

BANANA

PEACH

PEAR

MANGO

WATERMELON AVOCADO

GRAPES

KIWI

APPLE

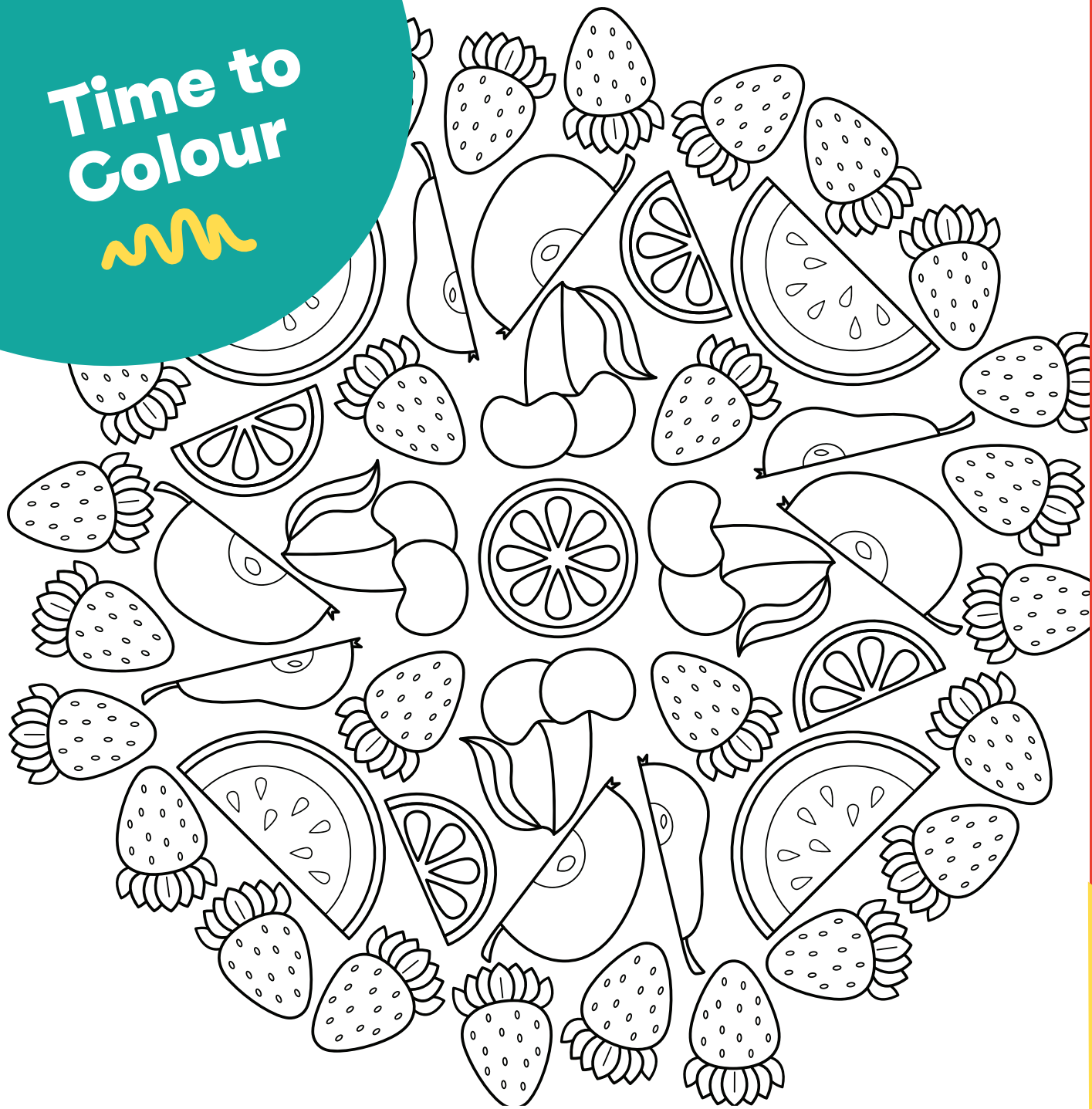
PLUM

LEMON

ORANGE

W	Q	L	S	M	A	N	G	O	L	O	E	R	O
N	U	A	U	T	V	N	G	C	D	M	A	F	H
G	R	V	O	C	R	L	D	A	P	E	K	A	Z
G	B	A	N	A	N	A	C	N	P	U	P	L	M
V	C	I	E	F	P	O	W	M	T	T	L	E	D
W	H	N	M	K	V	E	Q	B	H	E	U	M	O
P	E	L	H	A	A	D	A	U	E	F	M	O	R
B	R	E	H	E	M	Y	C	C	I	R	E	N	A
A	R	U	P	R	O	Y	W	G	H	P	R	B	N
P	Y	W	A	T	E	R	M	E	L	O	N	Y	G
P	P	H	M	Z	T	U	G	R	A	P	E	S	E
L	P	I	N	E	A	P	P	L	E	K	I	W	I
E	M	E	L	O	N	S	P	B	Y	Z	P	H	O
I	T	L	F	G	O	F	I	F	J	C	E	V	O

Time to Colour



Word Search



- MELON
- STRAWBERRY
- CHERRY
- PINEAPPLE
- BANANA
- PEACH
- PEAR
- MANGO
- WATERMELON
- AVOCADO
- GRAPES
- KIWI
- APPLE
- PLUM
- LEMON
- ORANGE

W	Q	L	S	M	A	N	G	O	L	O	E	R	O
N	U	A	U	T	V	N	G	C	D	M	A	F	H
G	R	V	O	C	R	L	D	A	P	E	K	A	Z
G	B	A	N	A	N	A	C	N	P	U	P	L	M
V	C	I	E	F	P	O	W	M	T	T	L	E	D
W	H	N	M	K	V	E	Q	B	H	E	U	M	O
P	E	L	H	A	A	D	A	U	E	F	M	O	R
B	R	E	H	E	M	Y	C	C	I	R	E	N	A
A	R	U	P	R	O	Y	W	G	H	P	R	B	N
P	Y	W	A	T	E	R	M	E	L	O	N	Y	G
P	P	H	M	Z	T	U	G	R	A	P	E	S	E
L	P	I	N	E	A	P	P	L	E	K	I	W	I
E	M	E	L	O	N	S	P	B	Y	Z	P	H	O
I	T	L	F	G	O	F	I	F	J	C	E	V	O